

JVC

SERVICE MANUAL

STEREO HEADPHONES

HA-CD68 (E)

The "Product Exchange System" is applicable to this product.
For limited spare parts, refer to the parts list.



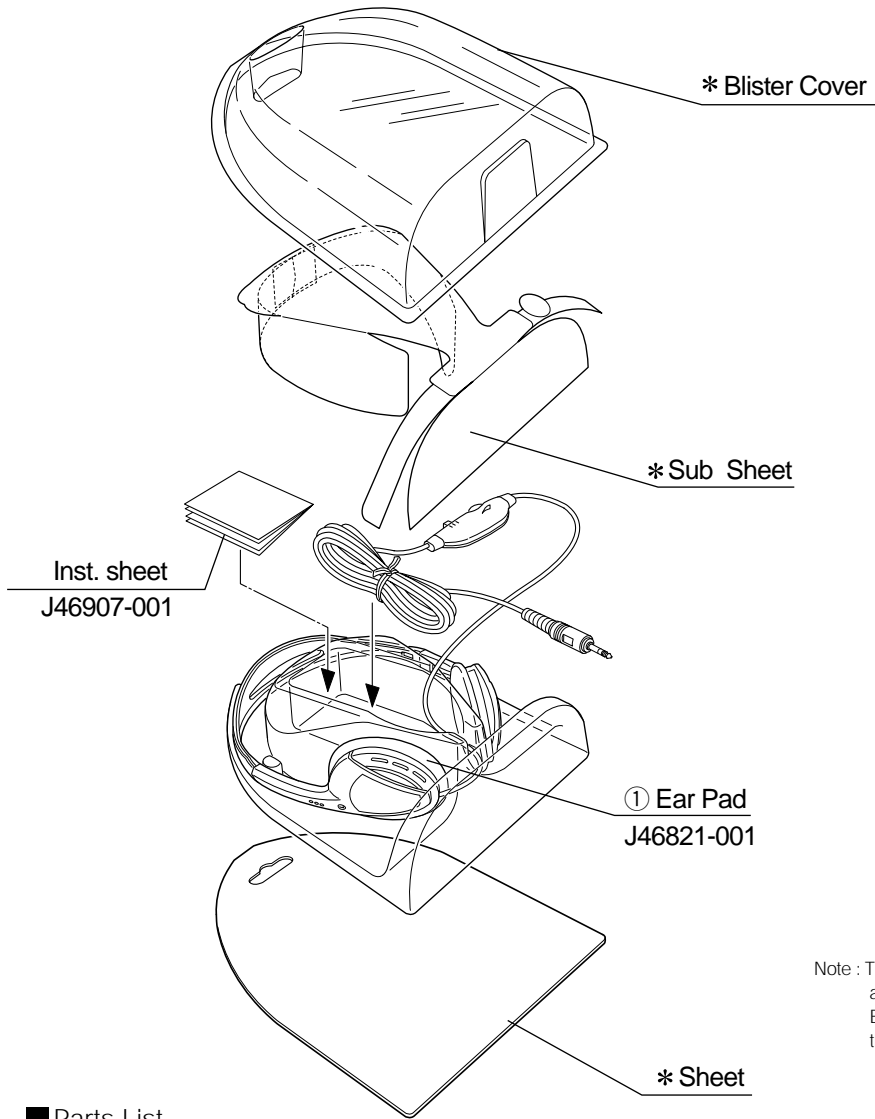
HA-CD68 (E)

Specifications

	HA-CD68
Type	Moving coil
Frequency response	15 Hz-22 000 Hz
Nominal impedance	32 ohms
Sensitivity	98 dB/1 mW
Max.input capability	50 mW
Cord length	7 m (22.96 ft) with 3.5mm dia.stereo miniplug
Mass	58 g (2.05 oz) without cord 110 g (3.89 oz) with cord

Design and specifications subject to change without notice.

Packing Method



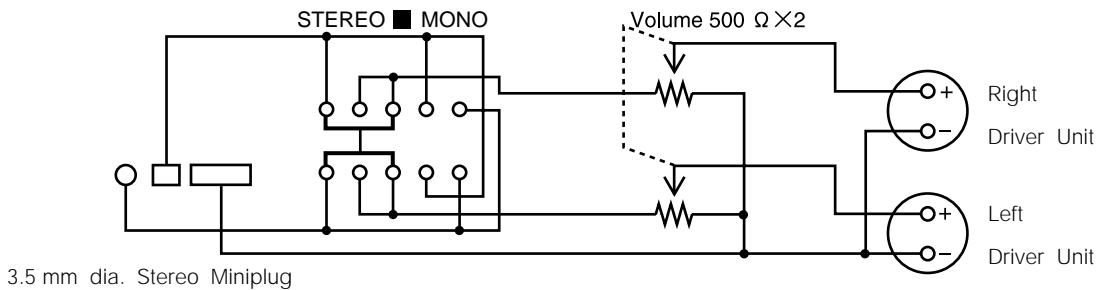
Note : These parts which was marked * (Blister cover/sub sheet and sheet) will not be able to supply as our service parts Because the blister cover and rear sheet cover together of this package are adhered by glue.

Parts List

△	Item No.	Parts No.	Parts Name	Q' ty	Description
	1	J46821-001	Ear Pad	2	

*Parts marked (△) are safety parts. When replacing, be sure to use the specified one.

Wiring Diagram



VICTOR COMPANY OF JAPAN, LIMITED

COMMUNICATION NETWORK BUSINESS UNIT, 1644, SHIMOTSURUMA, YAMATO-SHI, KANAGAWA-KEN, 242-8514, JAPAN